

**SITE DESCRIPTION**

Location: On the north side of Highway 50, ½ mile west of Road G (Americus Road) in Lyon County, Kansas  
Size: 151 acres  
Characteristics: Topography gently sloping from the north to the south  
Present Land Use: Agricultural (row crops and pasture)  
Zoning: Light Industrial  
Environmental: A level one environmental assessment has been conducted with no significant findings in August 2001

**UTILITIES**

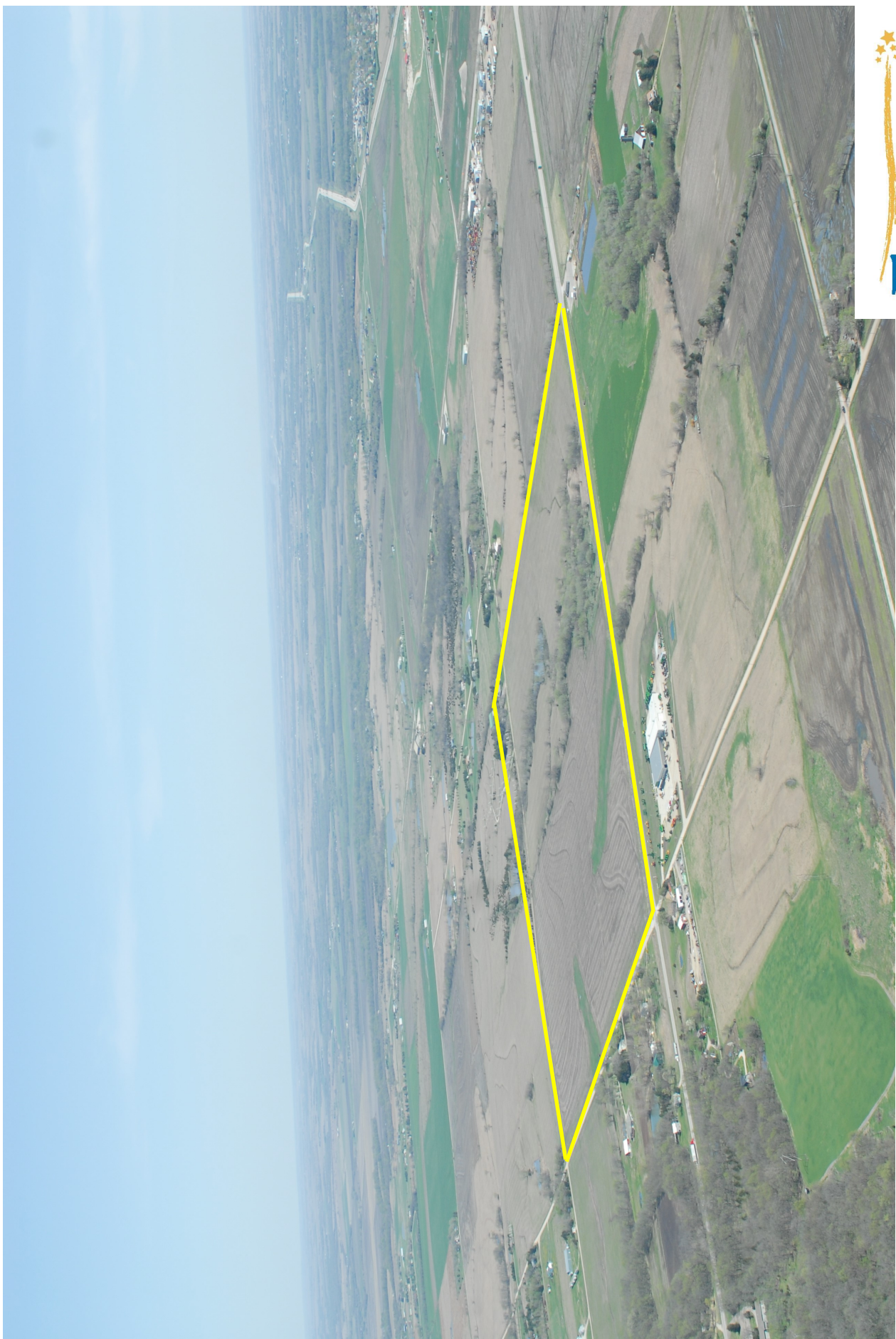
Electricity: Everygy supplies single phase power, call 620-341-7065 for more information.  
Natural Gas: Kansas Gas has a 4” high-pressure 50-psi transmission line on the south side of the tract, call 620-591-8012 for more information  
Water: City of Emporia has a 12” water main on the north, west and south sides of the Industrial Park., call 620-340-6430 for more information  
Sanitary: City of Emporia has a lift station on Lot 2 with an 8” forced main east 1,800’ to a gravity flow manhole. On the southeast corner of Lot 1 is a manhole with gravity flow 18” main to the lift station on Lot 2, call 620-340-6430 for more information .  
Telecommunications: Valu-Net FIBER has fiber optic cable at the northwest corner of U.S. Highway 50 & Road G, which is 2,500 feet east of the park. The Gigabit service provides secure Broadband Internet, Ethernet and Voice Communication services including Analog Voice, PRI and SIP trunk service. For further information call 620-208-5000.

**TRANSPORTATION**

Highways: The industrial site is adjacent to U.S. Highway 50 and within one mile of I-35 and the Kansas Turnpike I-335.  
Railroads: Site not served.  
Air Service: Emporia Municipal Airport south of Emporia, seven miles from the site. A 5,000-foot hard-surface, lighted runway with NDB and VOR. The airport accommodates most business jet aircraft.

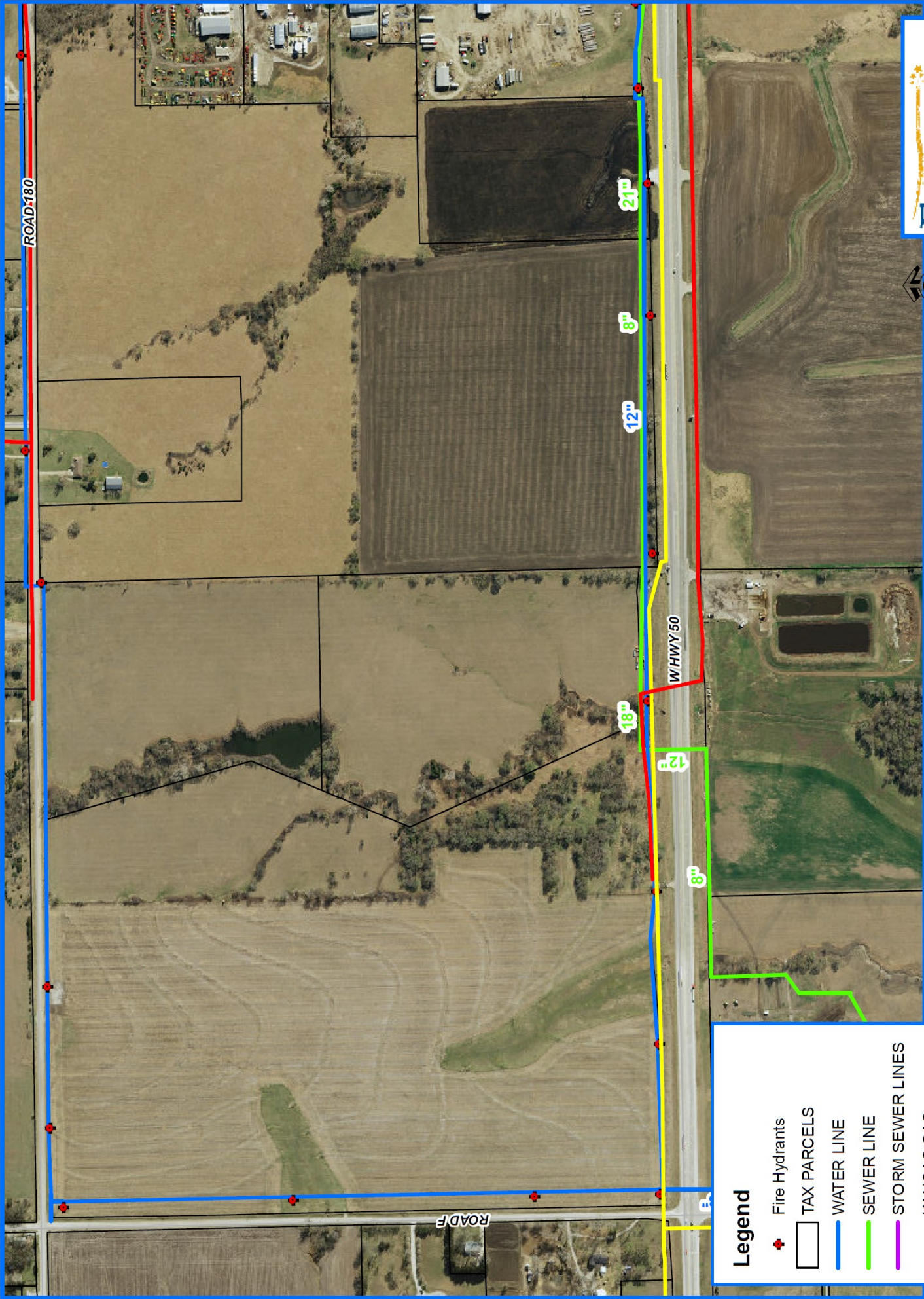
**OTHER INFORMATION**

Owner: Emporia Enterprises, Inc.  
Contact: Chuck Scott, President  
Regional Development Association of East Central Kansas  
719 Commercial Street  
Emporia, KS 66801  
620-342-1600 Fax 620-342-3223  
E-mail [cscott@emporiarda.org](mailto:cscott@emporiarda.org)



**INDUSTRIAL PARK IV, EMPORIA, KANSAS**





Date: 9/17/2015

**DATA IS NOT SURVEY ACCURATE**  
**INDUSTRIAL PARK IV**  
 Existing utilities

**Legend**

- ◆ Fire Hydrants
- TAX PARCELS
- WATER LINE
- SEWER LINE
- STORM SEWER LINES
- KANSAS GAS
- ELECTRIC



